

WHAT IS THE LUTHERAN LEGAL LEAGUE ?

The Lutheran Legal League, or "L3", is a collection of lawyers who are:

1. Active members of a Lutheran Church Missouri-Synod (LCMS) congregation
2. Licensed to practice law in the state
3. Interested in providing their unique legal services to an LCMS entity/member

The L3 currently has nearly 100 actively practicing members in 24 states and the District of Columbia. It is our deepest desire for L3 to be a resource to all 6,000+ of our churches, schools and to our +2 million LCMS members.



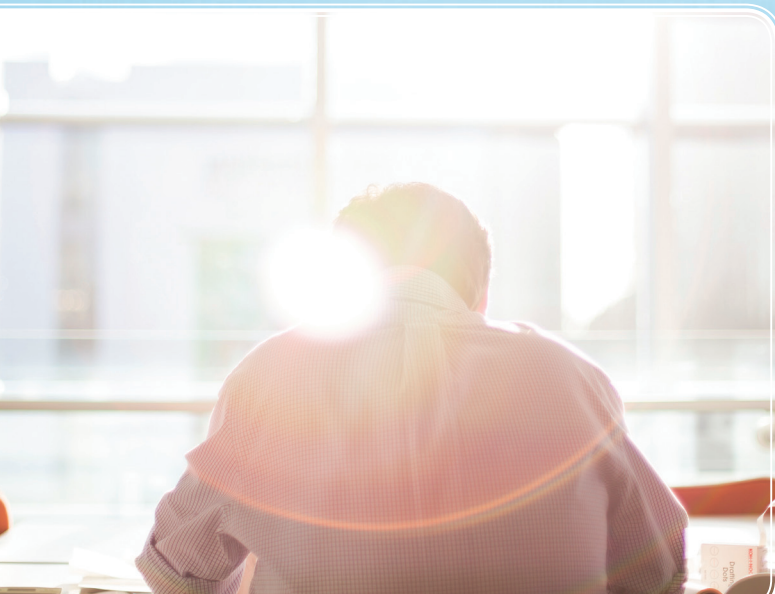
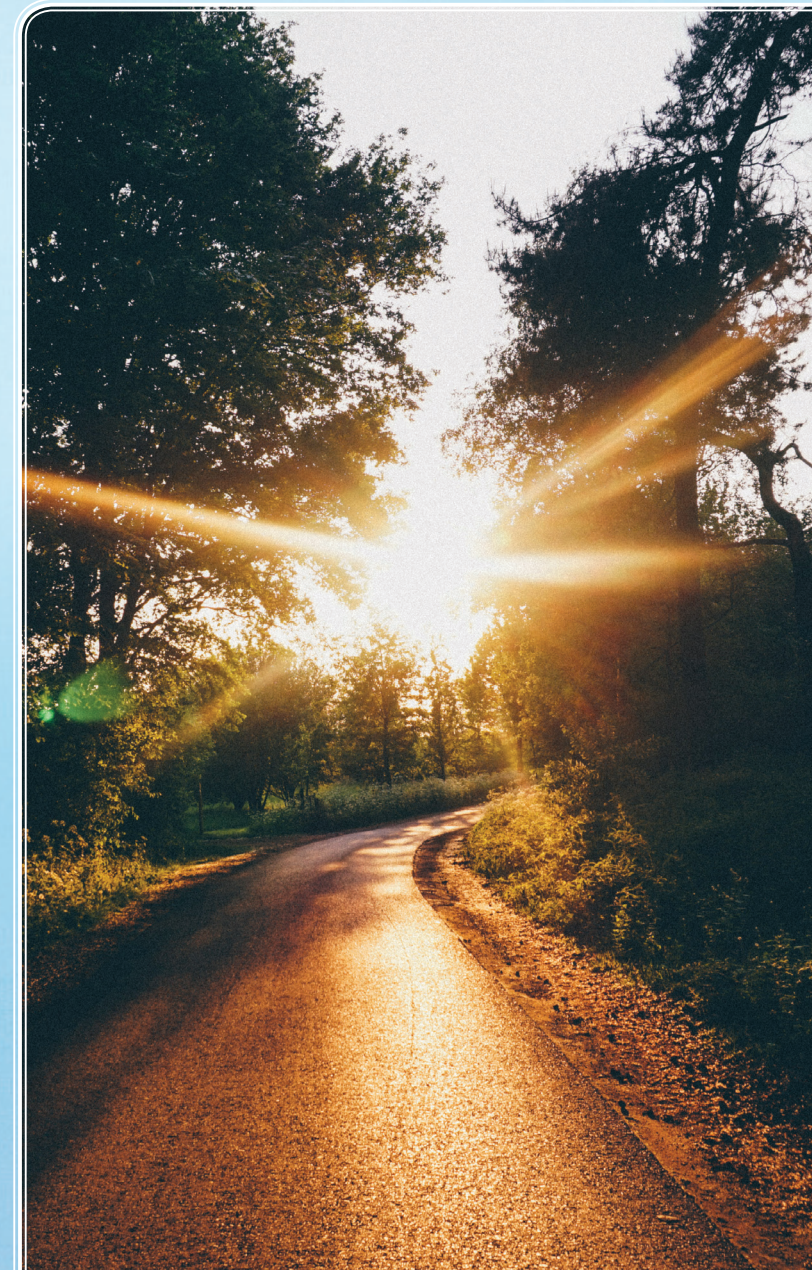
HOW DO I JOIN?

If you are an actively worshipping attorney who meets the membership criteria, we would like to extend an invitation to become part of this ministry! We also gladly accept recommendations for lawyers you may know that meet the criteria.

Email Rusty Huseman, President of L3 at: **RustyH@lutheranlegalleague.org** or give us a call at **(904) 591-4822**. You can also connect with us on Facebook and LinkedIn (@LutheranLegalLeague) if you'd like to connect online!



SERVING OUR COMMUNITY
AND CHRIST





WHAT DOES L3 DO ?

L3 exists solely to provide LCMS entities, missions, and congregation members access to lawyers who happen to also be actively worshipping in an LCMS church.

There is no membership fee for an attorney to join, and in the event the requesting party and the attorney engage in a professional relationship, L3 takes no referral fee from the transactions. Our member colleagues have provided countless of hours of legal work pro-bono. However, that is not L3's mandate. We simply need members whose hearts are bent for service.

"THE NEED IS
GREAT, BUT
THE WORKERS
ARE **FEW**."



WHY SHOULD I JOIN ?

L3 is simply a resource to our LCMS family; a connection place, if you will. For that reason, L3 needs strategically located LCMS attorneys who are ready, willing and able to help God's people and His Church in the LCMS by answering questions and providing guidance.

What better way to do so than through a fraternal organization whose members' hearts are bent on serving our Lord as L3 members minister to God's people by using the gifts God gave them. It's about connecting people to Jesus through service.